

1 TYPICAL WINDOW ELEVATIONS

SCALE: N.T.S

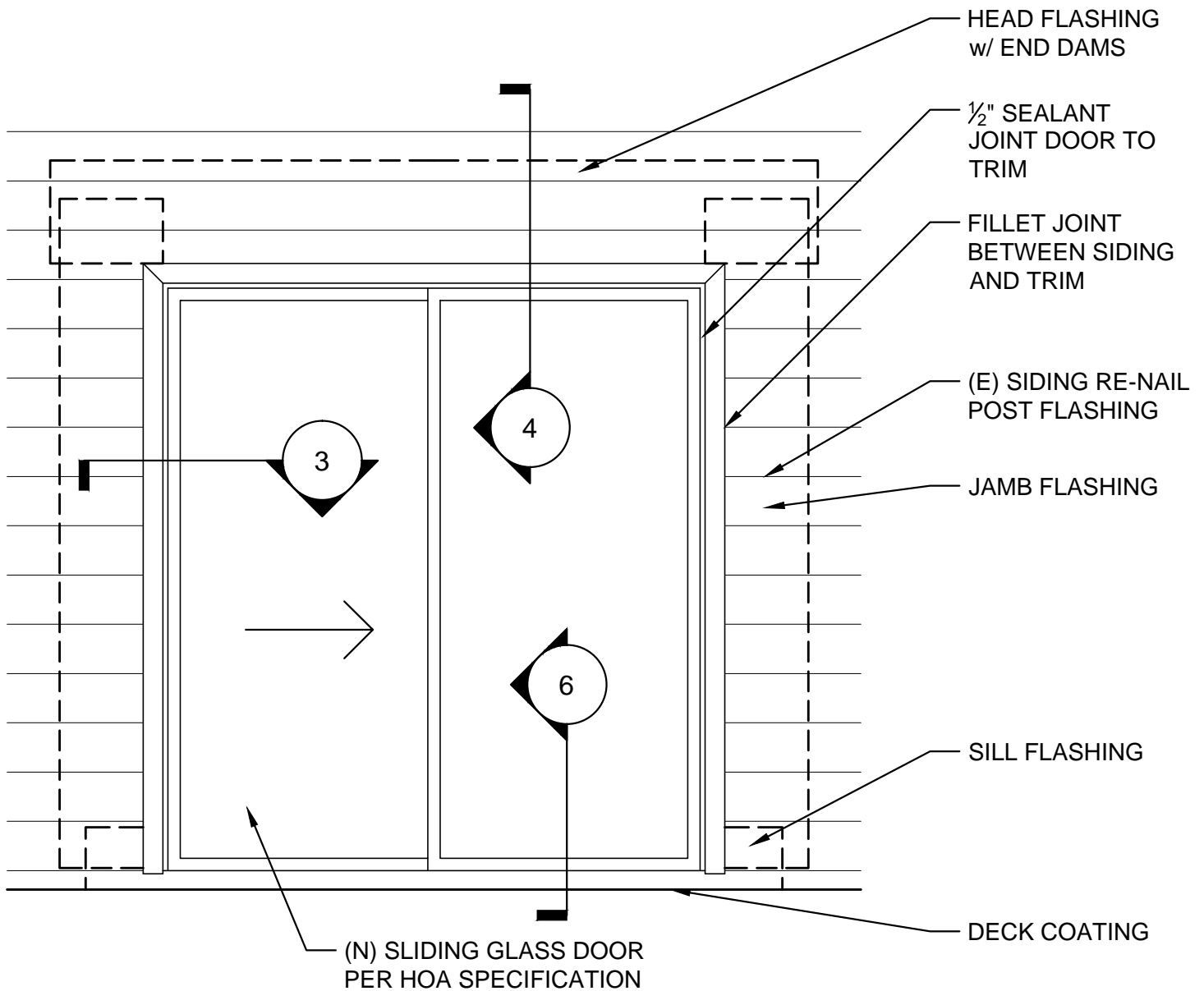


701 Dexter Avenue North
Suite 301
Seattle, WA 98109-4342
t: 206.285.4300
f: 206.285.4371
w: www.oacsvcs.com

DATE	06/08/2015
DRAWN	BJM
CHECK	NES
JOB	2013061

**WINDOW AND SLIDING GLASS
DOOR REPLACEMENT DETAILS**
SUN FJORD
SCALE : N.T.S

BE-1



1

SLIDING GLASS DOOR

SCALE: N.T.S

OAC

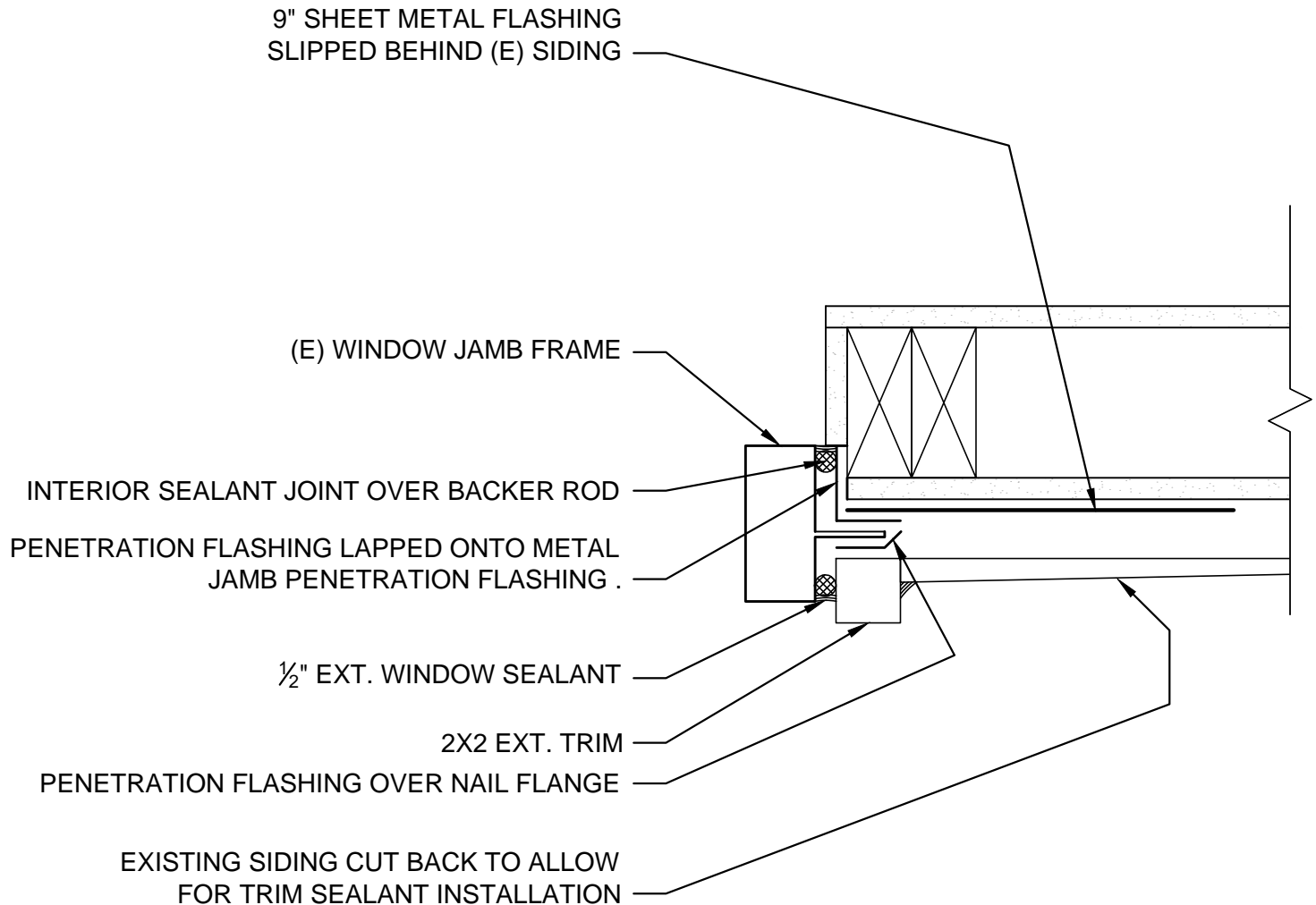
701 Dexter Avenue North
Suite 301
Seattle, WA 98109-4342

t: 206.285.4300
f: 206.285.4371
w: www.oacsvcs.com

DATE	06/08/2015
DRAWN	BJM
CHECK	NES
JOB	2013061

**WINDOW AND SLIDING GLASS
DOOR REPLACEMENT DETAILS**
SUN FJORD
SCALE : N.T.S

BE-2



3

WINDOW JAMB AT SIDING

SCALE: N.T.S

OAC

701 Dexter Avenue North
Suite 301
Seattle, WA 98109-4342

t: 206.285.4300
f: 206.285.4371
w: www.oacsvcs.com

DATE	06/08/2015
DRAWN	BJM
CHECK	NES
JOB	2013061

**WINDOW AND SLIDING GLASS
DOOR REPLACEMENT DETAILS**

SUN FJORD

SCALE : N.T.S

BE-3

(E) SIDING REMOVE & REPLACE AS REQUIRED

WRB

PENETRATION FLASHING
EXTENDING 9" ABV. R.O.
WRAPPED INTO OPENING

PENETRATION FLASHING OVER NAIL FLANGE

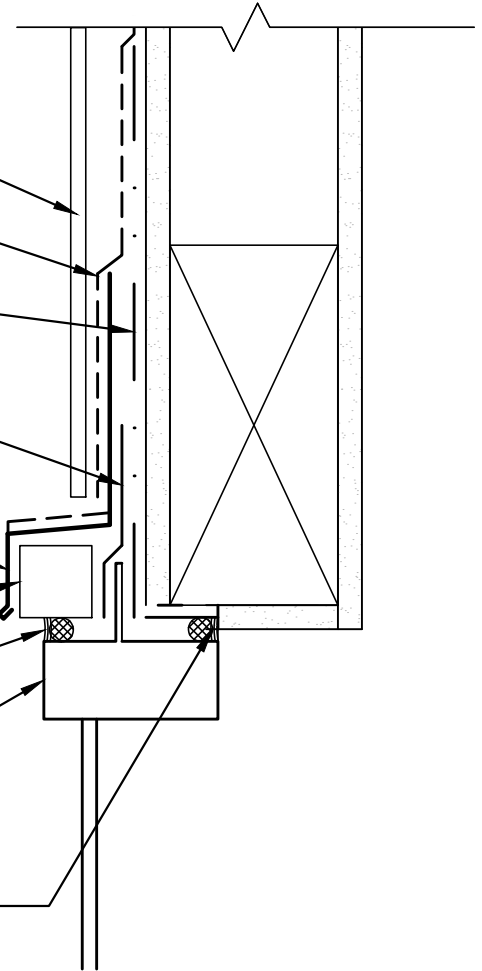
HEAD FLASHING WITH FOLDED END DAMS

EXT. TRIM

EXTERIOR SEALANT OVER BACKERROD

(E) WINDOW HEAD

INTERIOR SEALANT



4

WINDOW HEAD DETAIL

SCALE: N.T.S

OAC

701 Dexter Avenue North
Suite 301
Seattle, WA 98109-4342

t: 206.285.4300
f: 206.285.4371
w: www.oacsvcs.com

DATE 06/08/2015

DRAWN BJM

CHECK NES

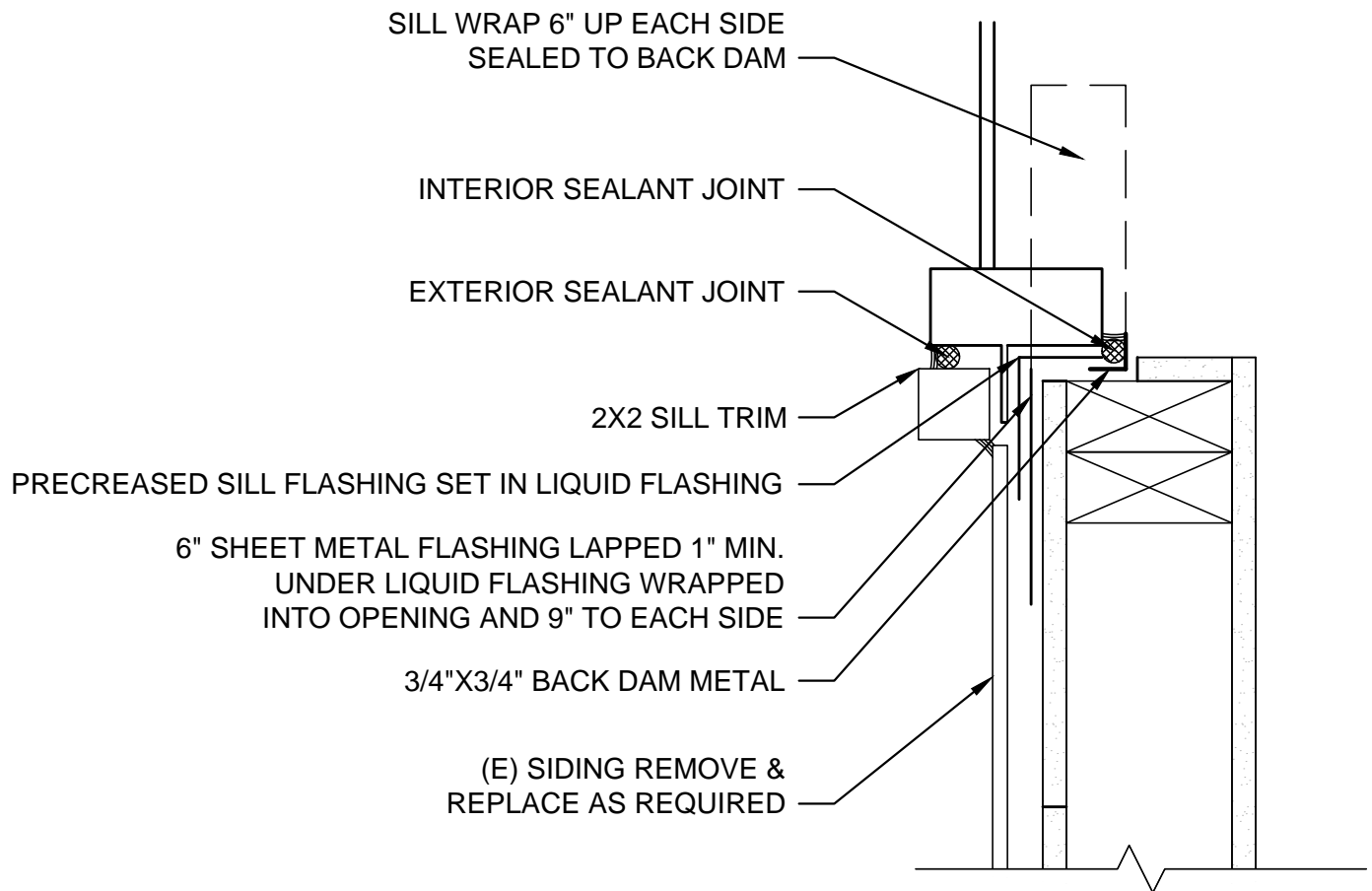
JOB 2013061

**WINDOW AND SLIDING GLASS
DOOR REPLACEMENT DETAILS**

SUN FJORD

SCALE : N.T.S

BE-4



5

WINDOW SILL DETAIL

SCALE: N.T.S

OAC

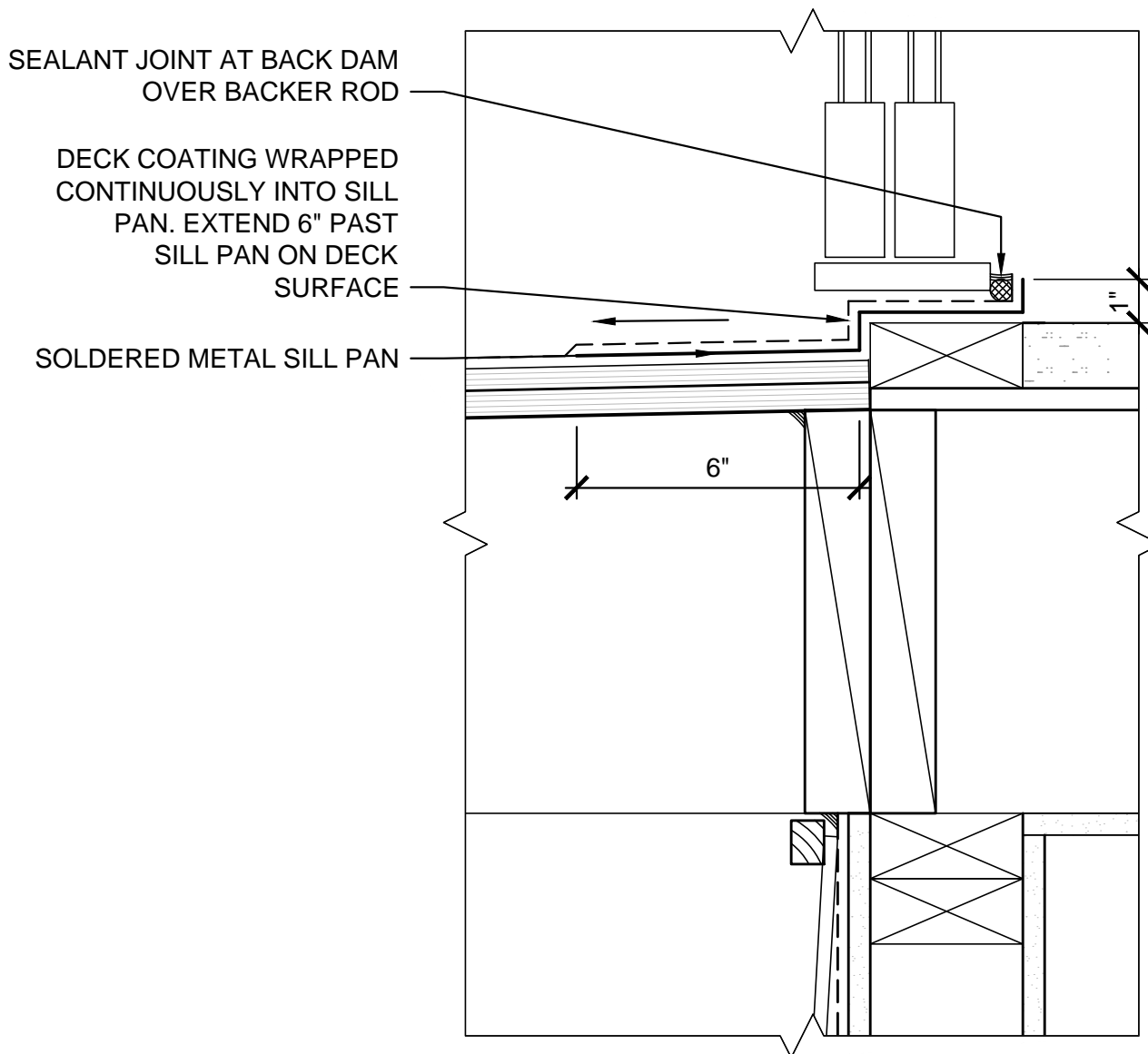
701 Dexter Avenue North
Suite 301
Seattle, WA 98109-4342

t: 206.285.4300
f: 206.285.4371
w: www.oacservcs.com

DATE	06/08/2015
DRAWN	BJM
CHECK	NES
JOB	2013061

**WINDOW AND SLIDING GLASS
DOOR REPLACEMENT DETAILS**
SUN FJORD
SCALE : N.T.S

BE-5



6

SLIDING GLASS DOOR SILL DETAIL

SCALE: N.T.S

<div style="display: flex; align-items: center;"> <div style="font-size: 2em; font-weight: bold; margin-right: 5px;">OAC</div> <div style="font-size: 0.8em;"> 701 Dexter Avenue North Suite 301 Seattle, WA 98109-4342 t: 206.285.4300 f: 206.285.4371 w: www.oacsvcs.com </div> </div>	DATE	06/08/2015	<div style="text-align: center;"> <h2 style="margin: 0;">WINDOW AND SLIDING GLASS DOOR REPLACEMENT DETAILS</h2> <p style="margin: 0;">SUN FJORD</p> <p style="margin: 0;">SCALE : N.T.S</p> </div>	<div style="font-size: 3em; font-weight: bold;">BE-6</div>
	DRAWN	BJM		
	CHECK	NES		
	JOB	2013061		

PRODUCT MATRIX SPECIFICATION				
PRODUCT TYPE	PRODUCT MANUFACTURER	PRODUCT NAME	INSTALLATION SPEC.	COMMENTS
METAL FLASHINGS	CUSTOM MANUFACTURER		26 GAUGE PRIMED OR BONDERIZED AS APPROPRIATE. SUBMIT SHOP DRAWINGS OF ALL FLASHING SHAPES FOR APPROVAL.	HEAD AND CAP FLASHINGS TO INCLUDE FOLDED END DAMS IN ALL CASES.
TRIM		SELECT TIGHT KNOT CEDAR TRIM	INSTALLED PER THE WESTERN RED CEDAR LUMBER ASSOCIATION'S PUBLISHED RECOMMENDED INSTALLATION INSTRUCTIONS.	SIZE AND FINISH TO MATCH EXISTING SIDING. PRIME ALL SIDES INCLUDING CUT ENDS USE ONLY DOUBLE DIPPED GALVANIZED OR STAINLESS STEEL FASTENERS
SEALANT	BASF	SONOLASTIC 150	INSTALL PER MANUFACTURER'S PUBLISHED RECOMMENDED INSTALLATION INSTRUCTIONS.	MINIMUM SIZE OF SEALANT JOINT = 3/8" VERIFY COMPATABILITY OF SUBSTRATES. PERFORM PULL TESTS PER MANUFACTURER'S RECOMMENDATIONS.
BACKER ROD	NOMACO	NOMACO HBR CLOSED CELL BACKER ROD	INSTALLED PER MANUFACTURERS INSTRUCTIONS	SIZE BACKER ROD 25% LARGER THAN THE JOINT TO BE FILLED TO ENSURE A SECURE FIT.
WINDOW AND DOOR PENETRATION FLASHING	PROSOCO	FAST FLASH	INSTALLED PER MANUFACTURER'S PUBLISHED RECOMMENDED INSTALLATION INSTRUCTIONS.	SEE ARCHITECTURAL DRAWINGS FOR STEP BY STEP INSTALLATION INSTRUCTIONS.



PRODUCT SPECIFICATION MATRIX

SCALE: N.T.S



DATE	06/08/2015
DRAWN	BJM
CHECK	NES
JOB	2013061

**WINDOW AND SLIDING GLASS
DOOR REPLACEMENT DETAILS**
SUN FJORD
SCALE : N.T.S

BE-7